



TORONTO
2800 Skymark Ave, Ste, 203 Mississauga, ON L4W 5A6
[T] 416 783 7500

EDMONTON
12900-148TH Street, Edmonton, AB T5L 2H8
[T] 780 747 1670

HAMILTON
1620 Claybar Road, Ancaster, ON L9G 3L4
[T] 905 692 0133

SALES@PROSCAFFNA.COM
WWW.PROSCAFFNA.COM

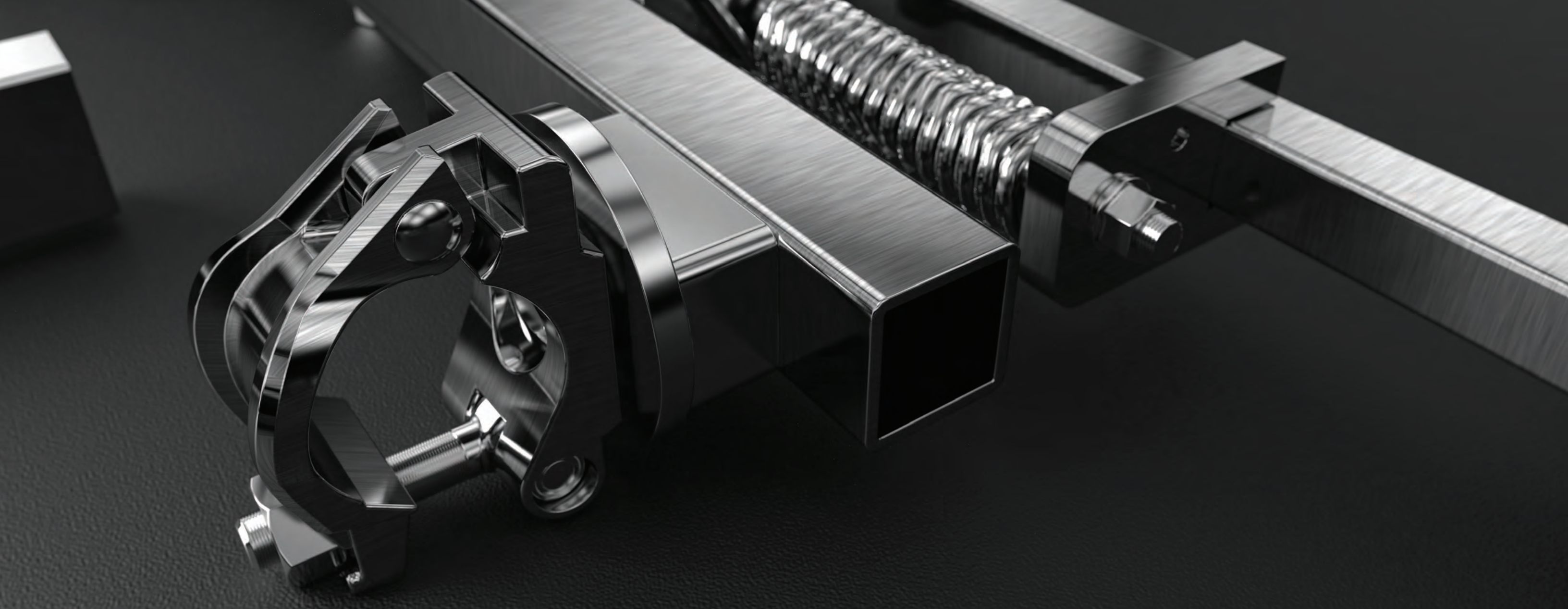


PROSCAFF ENTERPRISES INC.

PRODUCT MANUAL 2018



VER.18.01-00



SECTION ONE

01-06

Overview

- Introduction 02
- Ringlock Node Connection 03
- Product Traceability 04
- Color Coded Components 05

SECTION TWO

07-18

Ringlock

- Base 08
- Ledgers 11
- Brackets 12
- Girders 15
- Transoms 16
- Braces 17

SECTION THREE

19-24

Work Platforms

- Steel Plank 20
- Toeboard 21
- Aluminum Ply Deck 22
- Laminated Planks 23

SECTION FOUR

25-30

Access & Egress

- Ladder 26
- Universal Ladder Bracket 26
- Stair Stringer 27
- Stair Tread 27
- Stairway Ledger 28
- Guardrail Standard 28
- Safety Gates 29

SECTION FIVE

31-36

Accessories

- Rosette Clamp 32
- Davit Arm 32
- Leg Hanger 33
- Wedge & Rivet 33
- 6" U Head Jack 34
- Locking Pin 34
- Storage Racks 35

SECTION SIX

37-44

Tube & Clamp

- Clamps 38
- Joiners 41
- Adapters 42
- Aluminum Tube 43

SECTION ONE

Introduction

PROSCAFF QUALITY PROGRAM IS THE STANDARD BY WHICH OUR COMPANY OPERATES. OUR QUALITY POLICY REPRESENTS A SET OF PRINCIPLES THAT DO NOT CHANGE ACROSS THE ORGANIZATION, TYPE OF ACTIVITY OR PROJECT.

PROSCAFF QUALITY PROGRAM:

The program covers all aspects from design review and drawing validation, selection of suppliers, planning and implementation of procedures to execution and product delivery. A change in requirements triggers changes in procedures, new training sessions and quality control at the new level. As the late Phillip Crosby said "if finance would represent the blood, and relationships the soul, then Quality is the body of an organization."

WHY PROSCAFF:

We have launched flawlessly dozens of product systems and hundreds of components making our clients more successful again and again. Proscaff performance relies on four pillars: solid understanding of customer requirements, professional quality management, continuous improvement and recognition programs. Call us. We can help.

PROSCAFF QUALITY POLICY:

- Deliver defect-free products and services on time.
- Emphasize prevention of problems and establish a quality management system.
- Select and develop suppliers based on their ability to satisfy requirements.
- Establish reliable communication processes both internally and externally.
- Measure our progress against market and employee expectations.

SECTION ONE

Ringlock Node Connection

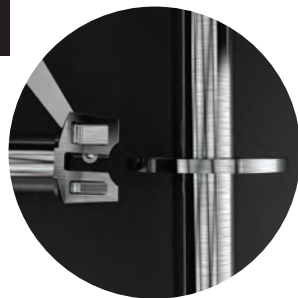
Ringlock node connection consists of standards with rosettes every 19.7" (0.5m) and horizontal members. When connected together the ledger ends and rosettes create a very strong connection.

The ringlock rosette has a diameter of 5" (123mm) and is manufactured with 8 slots, 4 small and 4 large. The smaller slots

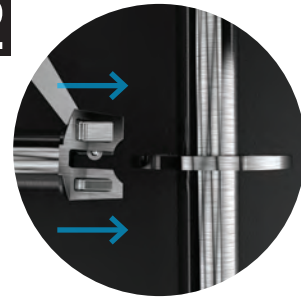
represent the 90 degree angle at which ledgers and transoms are installed. The larger trapezoidal slots accommodate the diagonal bay braces.

If the need arises, the ledgers can be installed in the trapezoidal slots allowing up to 15 degrees of rotation. This provides added flexibility to clear obstacles when necessary.

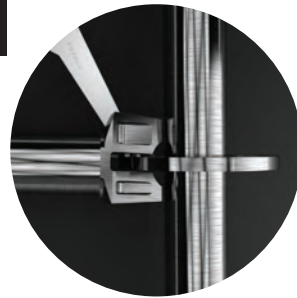
STEP
01



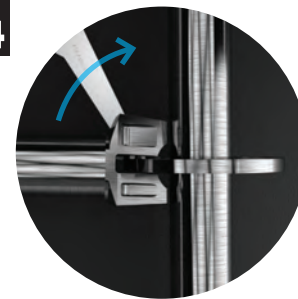
STEP
02



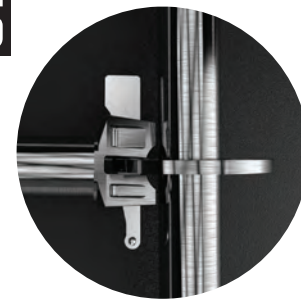
STEP
03



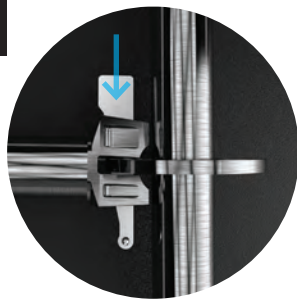
STEP
04



STEP
05



STEP
06



SECTION ONE

Product Traceability

ALL PROSCAFF COMPONENTS ARE STAMPED WITH TRACEABILITY MARKS.

KEY

X = PROSCAFF FACILITY ID

MM = MONTH OF MANUFACTURE

YY = YEAR OF MANUFACTURE

NNN = BATCH NUMBER

PSX MMYY NNN

PROSCAFF OFFERS CODED COMPONENTS MANUFACTURED WITH IDENTIFICATION LABELS.

THIS ALLOWS THE SCAFFOLDER TO EASILY MATCH PARTICULAR COMPONENTS FOR EACH SIZE OF BAY TO BE ERECTED.

SECTION ONE
Coded Components

CODED
Standards



CODED
Ledgers



CODED
Bay Braces





Section Two Ringlock

SECTION TWO Ringlock



BASE

Adjustable Base Jack [38x5]

An adjustable height starting base for a scaffold that allows for compensation on uneven surfaces.

PRODUCT		HEIGHT		WEIGHT		PACKAGING	
ITEM	PART.NO	M	FT	KG	LB	QTY	TYPE
Adj.Base Jack	1ABJACK	0.62	2'	3.8	8.4	200	Rack



BASE

Swivel Base Jack [38x5]

An adjustable height/angle starting base for a scaffold that allows for compensation on sloped uneven surfaces.

PRODUCT		HEIGHT		WEIGHT		PACKAGING	
ITEM	PART.NO	M	FT	KG	LB	QTY	TYPE
Swivel Base Jack	1SBJACK	0.69	2'3"	4.5	9.9	100	Rack

SECTION TWO
Ringlock



BASE
Base Collar

A vertical scaffold member that attaches to a fixed or adjustable base.

PRODUCT		HEIGHT		WEIGHT		PACKAGING	
ITEM	PART.NO	M	FT	KG	LB	QTY	TYPE
Base Collar	1BSC001	0.24	9"	1.6	3.5	400	Basket

SECTION TWO
Ringlock



BASE
Standards

A vertical scaffold member that has rosettes for attaching ledgers and bay braces.

PRODUCT		HEIGHT		WEIGHT		PACKAGING	
ITEM	PART.NO	M	FT	KG	LB	QTY	TYPE
3m Standard	1STD300	3.0	9'9"	15.3	33.7	100	Rack
2m Standard	1STD200	2.0	6'6"	10.2	22.5	100	Rack
1.5m Standard	1STD150	1.5	4'11"	8.0	17.6	100	Rack
1m Standard	1STD100	1.0	3'3"	5.4	11.9	200	Rack
0.5m Standard	1STD050	0.5	1'8"	3.4	7.5	200	Rack



BASE
12" Castor/Jack

An adjustable height castor that allows for a scaffold to be rolled across a surface.

PRODUCT		DIAMETER		WEIGHT	
ITEM	PART.NO	M	FT	KG	LB
12" Castor/Jack	1CAJA12	0.30	12"	20.18	44.5

SECTION TWO
Ringlock

SECTION TWO
Ringlock



LEDGER
Ledgers

A horizontal scaffold member that maintains the spacing between standards. Ledgers are also used for guard rails.

PRODUCT		LENGTH		WEIGHT		PACKAGING	
ITEM	PART.NO	M	FT	KG	LB	QTY	TYPE
3.05m Ledger	1LED305	3.05	10'	11.8	26.0	150	Rack
2.13m Ledger	1LED213	2.13	7'	8.5	18.7	150	Rack
6' Ledger	1LED600	1.82	6'	6.9	15.2	150	Rack
5'4" Ledger	1LED162	1.63	5'4"	6.7	14.8	150	Rack
1.57m Ledger	1LED157	1.57	5'2"	6.5	14.3	150	Rack
1.15m Ledger	1LED115	1.15	3'10"	5.0	11.0	150	Rack
3'6" Ledger	1LED107	1.07	3'6"	4.6	10.1	150	Basket
3' Ledger	1LED091	0.91	3'	4.0	8.7	150	Basket
0.65m Ledger	1LED065	0.65	2'2"	3.2	7.1	300	Rack



LEDGER
Double Ledgers

A horizontal scaffold member that allows for higher loads than regular ledgers.

PRODUCT		LENGTH		WEIGHT		PACKAGING	
ITEM	PART.NO	M	FT	KG	LB	QTY	TYPE
3.05m Dbl Ledger	1DBL305	3.05	10'	22.7	50.1	50	Rack
2.13m Dbl Ledger	1DBL213	2.13	7'	13.17	28.7	75	Rack
1.57m Dbl Ledger	1DBL157	1.57	5'2"	10.10	22.22	63	Rack



BRACKETS
Side Bracket [One Board]

A bracket used to extend the working area of a scaffold.

PRODUCT		WIDTH		WEIGHT		PACKAGING	
ITEM	PART.NO	M	FT	KG	LB	QTY	TYPE
One Board Side Bracket	1SBRSTUB	0.30	1'	1.7	3.7	500	Basket

SECTION TWO
Ringlock



BRACKETS

Side Bracket [Two Board]

A bracket used to extend the working area of a scaffold.

PRODUCT		WIDTH		WEIGHT		PACKAGING	
ITEM	PART.NO	M	FT	KG	LB	QTY	TYPE
Two Board Side Bracket	1SBR065	0.65	2'2"	7.0	15.4	50	Rack

SECTION TWO
Ringlock



BRACKETS

Side Bracket [Four Board]

A bracket used to extend the working area of a scaffold.

PRODUCT		WIDTH		WEIGHT		PACKAGING	
ITEM	PART.NO	M	FT	KG	LB	QTY	TYPE
Four Board Side Bracket	1SBR115	1.15	3'10"	13.1	28.9	25	Rack



BRACKETS

Side Bracket [Three Board]

A bracket used to extend the working area of a scaffold.

PRODUCT		WIDTH		WEIGHT		PACKAGING	
ITEM	PART.NO	M	FT	KG	LB	QTY	TYPE
Three Board Side Bracket	1SBR091	0.79	2'7"	8.7	19.2	25	Rack



BRACKETS

12" Side Hanger

A clamp used to connect a scaffold tube to a steel beam at any angle.

PRODUCT		WIDTH		WEIGHT	
ITEM	PART.NO	M	FT	KG	LB
Side Hanger	1SBR012	0.31	12"	3	6.6

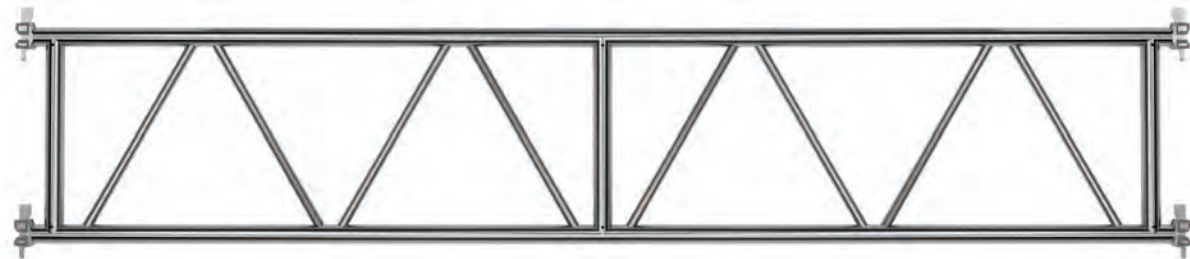
SECTION TWO
Ringlock

GIRDERS

Lattice Girder

A horizontal girder functioning as a truss that provides an extended span over obstacles or when bridging is required over an opening.

PRODUCT		LENGTH		WEIGHT	
ITEM	PART.NO	M	FT	KG	LB
Lattice Girder 28'	1TRU028	8.52	28'	87.8	193.6
Lattice Girder 21'	1TRU021	6.39	21'	66.4	146.4
Lattice Girder 17'	1TRU017	5.17	17'	52.0	114.7
Lattice Girder 14'	1TRU014	4.26	14'	45.0	99.2
Lattice Girder 10'	1TRU010	3.05	10'	32.9	72.5
Lattice Girder 7'	1TRU007	2.13	7'	23.7	52.3
Lattice Girder 5' 2"	1TRU052	1.57	5'2"	18.3	40.4
Lattice Girder 3' 10"	1TRU310	1.15	3'10"	14.0	30.9



SECTION TWO
Ringlock

TRANSOMS

Transoms

A horizontal scaffold member which adds support for wooden planks.



PRODUCT		LENGTH		WEIGHT		PACKAGING	
ITEM	PART.NO	M	FT	KG	LB	QTY	TYPE
2.13m Transom	1TRN213	2.13	7'	9.1	20.1	160	Rack
1.57m Transom	1TRN157	1.57	5'2"	7.1	15.7	160	Rack
1.15m Transom	1TRN115	1.15	3'10"	5.5	12.1	100	Rack

SECTION TWO
Ringlock



BRACES

Bay Brace

A member fixed diagonally to two or more members of a scaffold to provide rigidity to the scaffold.

PRODUCT		LENGTH		WEIGHT		PACKAGING	
ITEM	PART.NO	M	FT	KG	LB	QTY	TYPE
3.05m Brace	1BBR305	3.05	10'	11.5	25.4	150	Rack
2.13m Brace	1BBR213	2.13	7'	9.5	20.9	150	Rack
6' Brace	1BBR600	1.82	6'	9.0	19.8	150	Rack
5' 4" Brace	1BBR162	1.63	5'4"	9.0	19.8	150	Rack
1.57m Brace	1BBR157	1.57	5'2"	8.5	18.7	150	Rack
1.15m Brace	1BBR115	1.15	3'10"	7.9	17.4	150	Rack
3' Brace	1BBR300	0.91	3'	9.0	19.8	150	Rack
0.65m Brace	1BBR065	0.65	2'2"	7.5	16.5	150	Rack



SECTION THREE
Work Platforms



WORK PLATFORMS
Steel Plank

A metal platform unit used to support one or more workers or a uniformly distributed load.

PRODUCT		LENGTH		WEIGHT		PACKAGING	
ITEM	PART.NO	M	FT	KG	LB	QTY	TYPE
10' Steel plank	1SPL305	3.05	10'	20	44.1	60	Rack
7' Steel plank	1SPL213	2.13	7'	14.1	31.1	60	Rack
5'4" Steel plank	1SPL540	1.63	5'4"	11.3	24.9	60	Rack
5'2" Steel plank	1SPL157	1.57	5'2"	10.8	23.8	60	Rack
3'10" Steel plank	1SPL115	1.15	3'10"	8.4	18.5	60	Rack
3'6" Steel plank	1SPL360	1.07	3'6"	8.15	17.93	60	Rack
3' Steel plank	1SPL300	0.91	3'	7.20	15.86	60	Rack
2'2" Steel plank	1SPL065	0.65	2'2"	5.5	12.1	120	Rack

SECTION THREE

Work Platforms



WORK PLATFORMS
Toeboard

An upright member at platform level fastened around the platform perimeter to prevent objects from falling off the platform.

PRODUCT		LENGTH		WEIGHT		PACKAGING	
ITEM	PART.NO	M	FT	KG	LB	QTY	TYPE
3.05m Toeboard	1TBR305	3.05	10'	10.6	23.4	125	Rack
2.13m Toeboard	1TBR213	2.13	7'	7.4	16.3	125	Rack
1.57m Toeboard	1TBR157	1.57	5'2"	5.6	12.3	125	Rack
1.15m Toeboard	1TBR115	1.15	3'10"	4.2	9.3	125	Rack
0.65m Toeboard	1TBR065	0.65	2'2"	2.3	5.1	125	Rack

SECTION THREE

Work Platforms



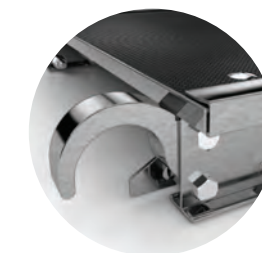
WORK PLATFORMS
Aluminum/Ply Deck

An aluminum frame and plywood platform unit used to support one or more workers or a uniformly distributed load.

PRODUCT		LENGTH		WEIGHT	
ITEM	PART.NO	M	FT	KG	LB
Aluminum/Ply Deck 10'	5ALPLY1019	3.05	10'	16.0	35.3
Aluminum/Ply Deck 7'	5ALPLY719	2.13	7'	10.4	22.9
Aluminum/Ply Deck 5' 2"	5ALPLY519	1.57	5'2"	7.8	17.2
Aluminum/Ply Deck 3' 10"	5ALPLY419	1.15	3'10"	6.1	13.5
Alum/Ply Deck 2' 2"	5ALPLY219	0.65	2'2"	4.1	9.0



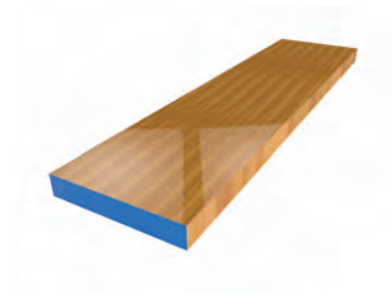
SUBSTRATE



HOOK CONNECTION

SECTION THREE

Work Platforms

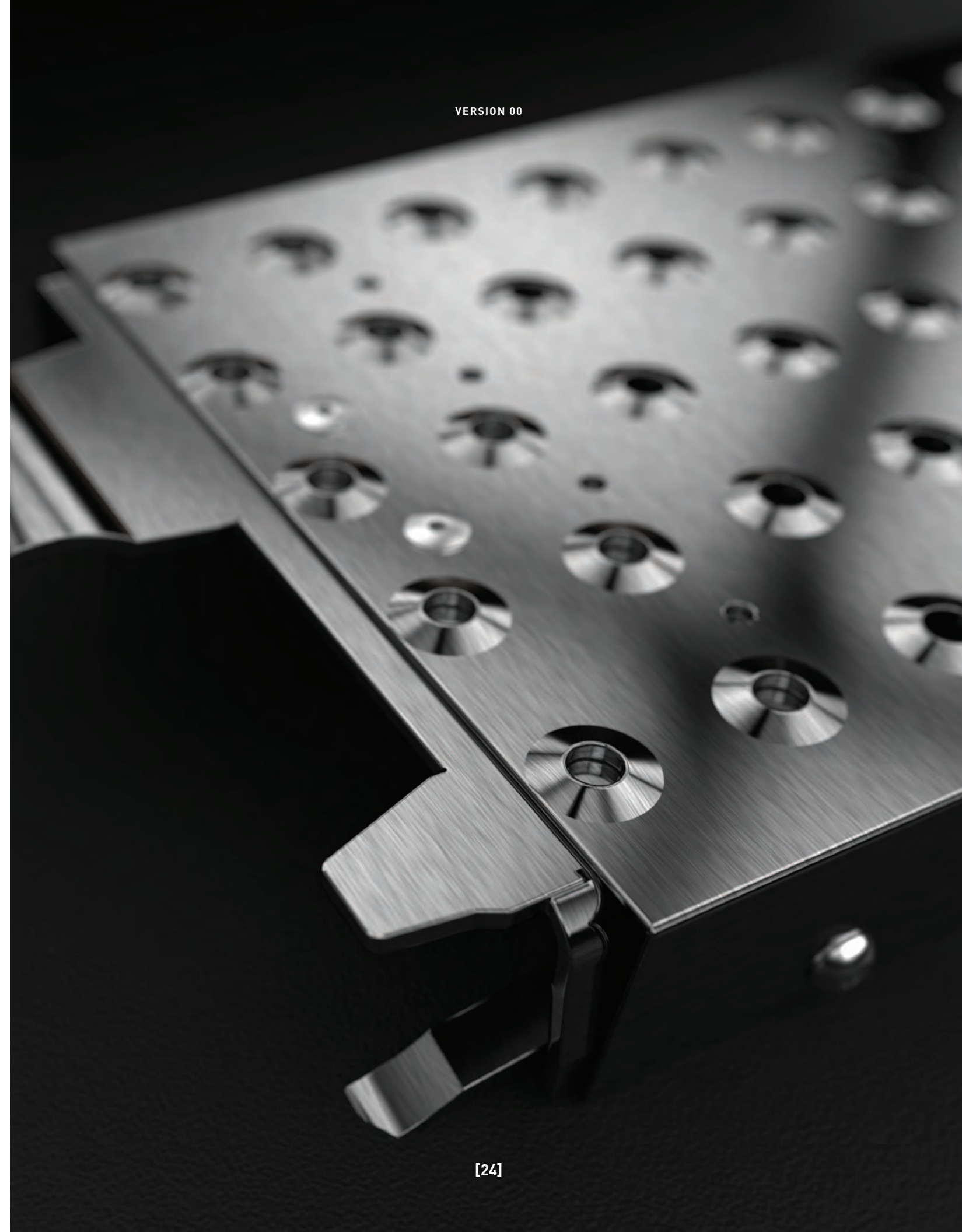


WORK PLATFORMS

Laminated Planks

A scaffold plank constructed of wooden veneered layers. Provides a stronger and longer lifespan when compared to traditional spruce scaffold planks.

PRODUCT		LENGTH	
ITEM	PART.NO	M	FT
Laminated Plank 24'	5024134	7.32	24'
Laminated Plank 20'	5020134	6.10	20'
Laminated Plank 16'	5016134	4.88	16'
Laminated Plank 12'	5012134	3.66	12'
Laminated Plank 10'	5010134	3.05	10'
Laminated Plank 8'	5008134	2.44	8'
Laminated Plank 6'	5006134	1.83	6'
Laminated Plank 5'	5005134	1.52	5'
Laminated Plank 4'	5004134	1.22	4'
Laminated Plank 2'	5002134	0.61	2'



SECTION FOUR

Access & Egress

04

Section Four Access & Egress



LADDERS & STAIRS

Ladders

A ladder used to provide access between deck levels.

PRODUCT		HEIGHT		WEIGHT		PACKAGING	
ITEM	PART.NO	M	FT	KG	LB	QTY	TYPE
3' Ladder	1LDR003	0.91	3'	5.45	12	25	Bundle
5' Ladder	1LDR005	1.52	5'	9.09	20	25	Bundle



LADDERS & STAIRS

Universal Ladder Bracket

A bracket used to fasten ladders to the scaffold.

PRODUCT		WIDTH		WEIGHT		PACKAGING	
ITEM	PART.NO	M	FT	KG	LB	QTY	TYPE
Univ. Ladder Bkt	1LDRBKT	0.43	17"	3.04	6.7	150	Basket

SECTION FOUR

Access & Egress



LADDERS & STAIRS

Stair Tread

A horizontal scaffold member that connects to the stair stringers to provide steps to the scaffold.

PRODUCT		WIDTH		WEIGHT		PACKAGING	
ITEM	PART.NO	M	FT	KG	LB	QTY	TYPE
Stair Tread	1STREAD	0.81	2'8"	6.6	14.6	69	Bundle



LADDERS & STAIRS

Stair Stringer

A diagonal scaffold member that is used to support the stair treads.

PRODUCT		BAY LENGTH		WEIGHT		PACKAGING	
ITEM	PART.NO	M	FT	KG	LB	QTY	TYPE
Stair Stringer	1SST213	2.13	7'	20.5	45.2	110	Rack
1m Stair Stringer	1SST036	1.07	3'6"	-	-	110	Rack

SECTION FOUR

Access & Egress



LADDERS & STAIRS

Stairway Ledger

A horizontal scaffold member that maintains the spacing between standards.

PRODUCT		LENGTH		WEIGHT		PACKAGING	
ITEM	PART.NO	M	FT	KG	LB	QTY	TYPE
Stairway Ledger	1LED107	1.07	3'6"	4.6	10.1	150	Basket



GUARDRAIL STANDARD

Guardrail Standard

Use along with ledgers to provide a guardrail near gated sections of the scaffold.

PRODUCT		HEIGHT		WEIGHT		PACKAGING	
ITEM	PART.NO	M	FT	KG	LB	QTY	TYPE
Guardrail Std	1STD411	1.64	5'5"	8.4	18.5	70	Rack

SECTION FOUR

Access & Egress



SAFETY GATES

Ringlock Safety Gate

A safety gate to provide fall protection.

PRODUCT		WIDTH		WEIGHT	
ITEM	PART.NO	M	FT	KG	LB
Ringlock Safety Gate	1PNLGTE	-	-	12.5	27.6



SAFETY GATES

Universal Safety Gate

A safety gate to provide fall protection. Works with both ringlock and tube and clamp systems.

PRODUCT		WIDTH		WEIGHT	
ITEM	PART.NO	M	FT	KG	LB
Universal Safety Gate	2SFTGTE	-	-	16.0	35.3





SECTION FIVE
Accessories

MISCELLANEOUS
Rosette Clamp



An accessory used to add a rosette at any point along a vertical standard.

PRODUCT		WEIGHT		PACKAGING	
ITEM	PART.NO	KG	LB	QTY	TYPE
Rosette Clamp	1ROSETCL	0.5	1.0	750	Basket

MISCELLANEOUS
Davit Arm



Connects anywhere on the scaffold and accepts a retractable lanyard for fall arrest purposes, or can be used as a lifting devise support.

PRODUCT		HEIGHT		WEIGHT		PACKAGING	
ITEM	PART.NO	M	FT	KG	LB	QTY	TYPE
Davit Arm	1DVTARM	0.82	2'8"	11.9	26.2	50	Rack

SECTION FIVE

Accessories



MISCELLANEOUS
Leg Hanger

An accessory used to connect two vertical standards when lifting or suspending the scaffold.

PRODUCT		HEIGHT		WEIGHT	
ITEM	PART.NO	KG	LB	QTY	TYPE
Leg Hanger	1LEGHAN	0.50	1'8"	8.0	17.6

SECTION FIVE

Accessories



PINS & RACKS
Locking Pin

A pin used to lock two standards together.

PRODUCT		WEIGHT		PACKAGING	
ITEM	PART.NO	KG	LB	QTY	TYPE
Locking Pin	1LOCKPN	0.05	0.11	500	Bag



MISCELLANEOUS
Replacement Wedge & Rivet

Replacement wedges and rivets for ledgers and braces.

PRODUCT		HEIGHT		WEIGHT		PACKAGING	
ITEM	PART.NO	M	FT	KG	LB	QTY	TYPE
Wedge & Rivet	1WEDGE	-	-	-	-	-	-



MISCELLANEOUS
6" U-Head Jack

An adjustable height jack for supporting aluminum beams, wooden beams or steel beams.

PRODUCT		HEIGHT		WEIGHT		PACKAGING	
ITEM	PART.NO	M	FT	KG	LB	QTY	TYPE
U-Head Jack	8TCE6UH	0.62	2	5	11	100	Rack

SECTION FIVE

Accessories



PINS & RACKS

Storage Rack

A rack that provides storage for scaffold members.

PRODUCT		HEIGHT		WEIGHT		PACKAGING	
ITEM	PART.NO	M	FT	KG	LB	QTY	TYPE
Storage Rack	9RACKV2	-	-	45.0	99.2	1	Rack



PINS & RACKS

Basket

A basket that provides storage for scaffold members.

PRODUCT		HEIGHT		WEIGHT		PACKAGING	
ITEM	PART.NO	M	FT	KG	LB	QTY	TYPE
Basket	9BASKET	-	-	65.0	143.3	1	Basket





Section Six
Tube & Clamp

SECTION SIX
Tube & Clamp



CLAMPS

Wedge Clamp [RAW]

A clamp used with scaffold tubes to create a 90 degree angle.

PRODUCT		WEIGHT		PACKAGING	
ITEM	PART.NO	KG	LB	QTY	TYPE
Wedge Clamp 2x2 RAW	2RAW2X2	1.5	3.3	500	Basket
Wedge Clamp 2x1 5/8 RAW	2RAW2X15/8	1.5	3.3	500	Basket



CLAMPS

Wedge Clamp [SWW]

A clamp used with scaffold tubes to create any angle.

PRODUCT		WEIGHT		PACKAGING	
ITEM	PART.NO	KG	LB	QTY	TYPE
Wedge Clamp 2x2 SWW	2SWW2X2	1.7	3.75	500	Basket
Wedge Clamp 2x1 5/8 SWW	2SWW2X15/8	1.7	3.75	500	Basket

SECTION SIX

Tube & Clamp



CLAMPS

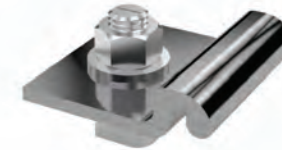
Beam Clamp [sw]

A clamp used to connect a scaffold tube to a steel beam at any angle.

PRODUCT		WEIGHT		PACKAGING	
ITEM	PART.NO	KG	LB	QTY	TYPE
Beam Clamp SW	2SWBMCL	1.64	3.60	700	Basket

SECTION SIX

Tube & Clamp



CLAMPS

A Clamp

A clamp used to fasten an aluminum beam.

PRODUCT		WEIGHT		PACKAGING	
ITEM	PART.NO	KG	LB	QTY	TYPE
A Clamp	8ACLAMP	0.14	0.31	500	Basket



CLAMPS

Beam Clamp [RA]

A clamp used to connect a scaffold tube to a steel beam at a 90 degree angle.

PRODUCT		WEIGHT		PACKAGING	
ITEM	PART.NO	KG	LB	QTY	TYPE
Beam Clamp RA	2BMCLMP	1.71	3.75	700	Basket



CLAMPS

Bolt Clamps

A clamp used with scaffold tubes to create any angle or a 90 degree angle.

PRODUCT		WEIGHT		PACKAGING	
ITEM	PART.NO	KG	LB	QTY	TYPE
Bolt Clamp RA	2RACLBT	1.48	3.26	700	Basket
Bolt Clamp SW	2SWCLBT	1.83	4.03	700	Basket

SECTION SIX

Tube & Clamp



CLAMPS

V Beam Clamp Assembly

A clamp used to connect an aluminum beam to scaffold tubes or ledgers.

PRODUCT		WIDTH		WEIGHT		PACKAGING	
ITEM	PART.NO	M	FT	KG	LB	QTY	TYPE
V Beam Clamp	2VBCLMP	-	-	-	-	500	Basket



JOINER

2x2 Joiner/End to End Clamp

A clamp that is used to provide a rigid connection between two tubes.

PRODUCT		INTERNAL DIAMETER		WEIGHT	
ITEM	PART.NO	M	FT	KG	LB
Joiner	2CLETE	-	2"	1.2	2.64

SECTION SIX

Tube & Clamp



ADAPTORS

Spigot Adaptor with Bolt Clamp

A scaffold member that allows for standards to be connected along horizontal members.

PRODUCT		WEIGHT		PACKAGING	
ITEM	PART.NO	KG	LB	QTY	TYPE
Spigot Adaptor w/ Bolt Clamp	1SADSPG	1.8	4.0	650	Basket

SECTION SIX

Tube & Clamp



ALUMINUM TUBE

Aluminum Scaffold Tube

An aluminum tube used with clamps to create a scaffold.

PRODUCT		LENGTH		WEIGHT		PACKAGING	
ITEM	PART.NO	M	FT	KG	LB	QTY	TYPE
Scaffold Tube 20'	2ALT020	6.10	20'	8.5	18.7	50	Bundle
Scaffold Tube 18'	2ALT018	5.49	18'	7.7	16.9	50	Bundle
Scaffold Tube 16'	2ALT016	4.88	16'	6.8	15.0	50	Bundle
Scaffold Tube 14'	2ALT014	4.27	14'	6.0	13.1	50	Bundle
Scaffold Tube 12'	2ALT012	3.66	12'	5.1	11.2	50	Bundle
Scaffold Tube 10'	2ALT010	3.05	10'	4.3	9.4	50	Bundle
Scaffold Tube 8'	2ALT008	2.44	8'	3.4	7.5	50	Bundle
Scaffold Tube 6'	2ALT006	1.83	6'	2.6	5.6	50	Bundle
Scaffold Tube 5'	2ALT005	1.52	5'	2.1	4.7	50	Bundle
Scaffold Tube 4'	2ALT004	1.22	4'	1.7	3.7	50	Bundle
Scaffold Tube 3'	2ALT003	0.91	3'	1.3	2.8	50	Bundle
Scaffold Tube 2'	2ALT002	0.61	2'	0.9	1.9	50	Bundle

